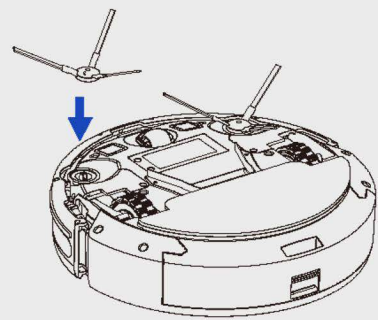
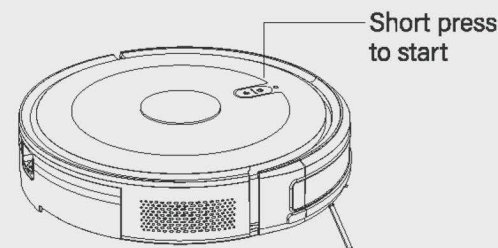


Quick Start Guide

Using Your Robot



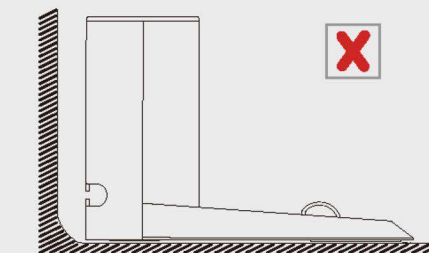
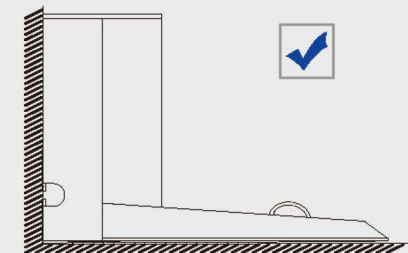
1



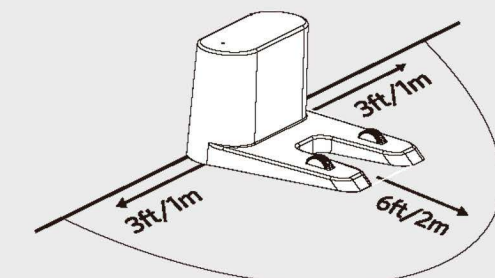
2



- Please install the side brush and lock the screw before use. Remove the foam block next to the bumper.



3



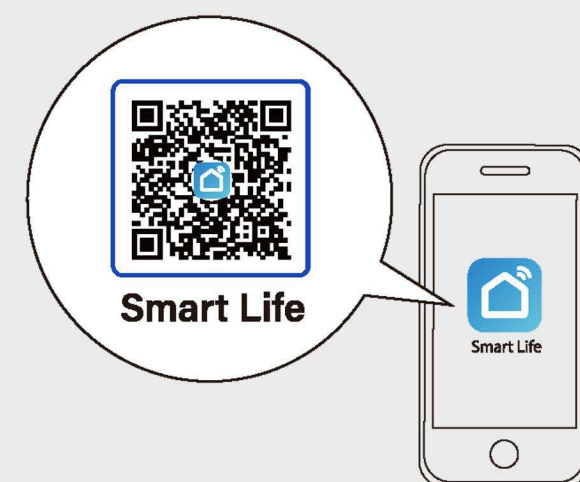
4



- Always keep the charging base plugged in, otherwise Robot will not Automatically return.
- When the Charging Base connects to AC power, the LED Indicator on the Charging Base is SOLID WHITE.



- Fully charge Robot before use. The LED indicator on Robot breathes orange while charging, and is solid green when fully charged.
- To use the machine for the first time, it needs to be started from the charging stand.



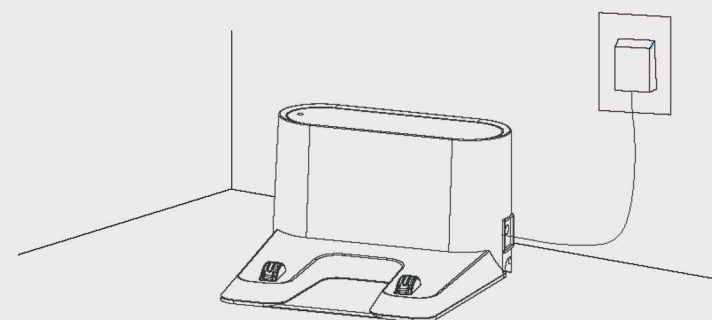
Download on the
App Store

GET IT ON
Google Play

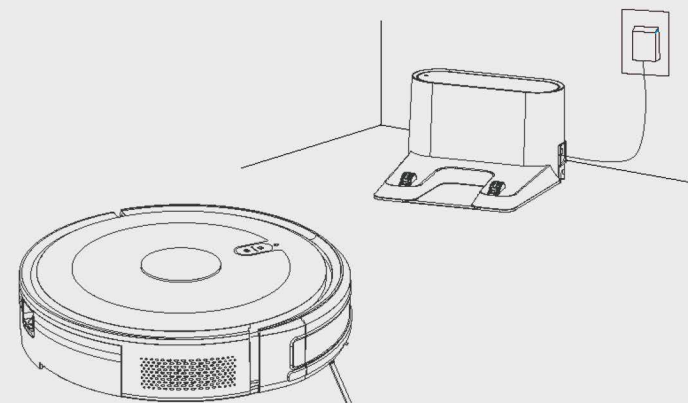
7



- Download the Smart Life App from the App Store (iOS devices) or Google Play (Android devices), follow the instructions in the app to complete the WiFi connection.
- Then you can control Robot with this app. Refer to the USER MANUAL for details.

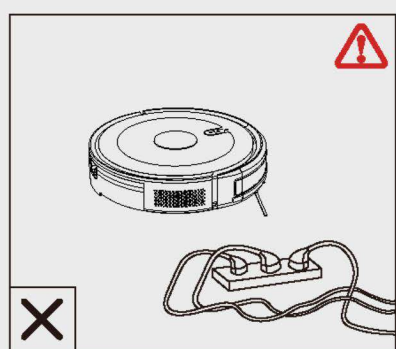


5

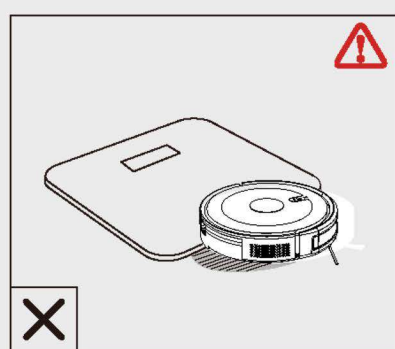


6

Important Tips



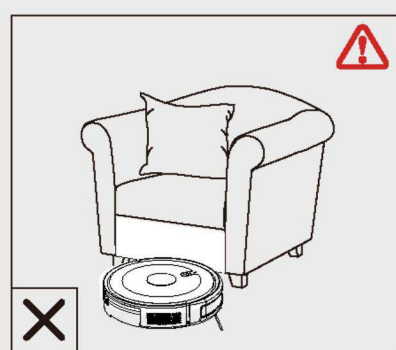
1



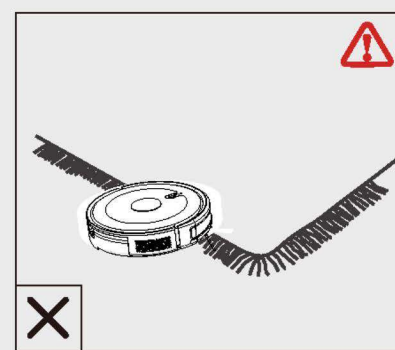
2



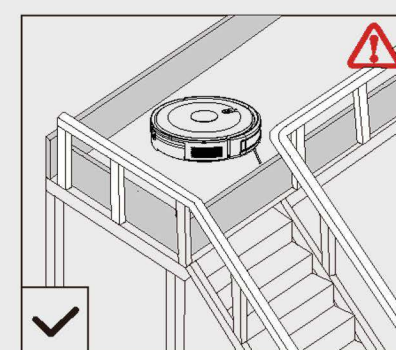
3



4



5



6

- 1 Remove every objects that might entangle the robot such as curtains stings, power cords, nails etc...
- 2 Robot may climb on top of objects less than 0.6 inch/15mm in height. Remove these objects if possible.
- 3 Keep robot away from wet areas.
- 4 Keep robot away from spaces lower than 2.89 inch/73.5mm to prevent robot from getting stuck. If necessary, place a physical barrier to block off the problem areas.
- 5 Fold tasseled edges of area rugs underneath to prevent tangling robot. Avoid cleaning very dark-colored high-pile rugs or rugs thicker than 1.02in/26mm as they may cause robot to malfunction.
- 6 Anti-drop sensors prevent robot from tumbling down stairs and steep drops. They may work less effectively if dirty or used on reflective/very dark-colored floors. It is recommended to place physical barriers to block off areas where Robot may fall.



Place physical barriers in front of fireplaces and areas that may cause damage to Robot if entered.